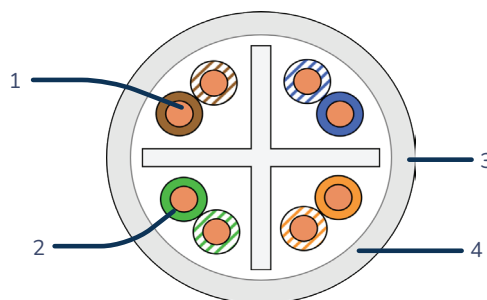


KCU6xPLZH D

Cat.6 cable U/UTP LSZH Dca 4 pairs AWG24



1. Conductor : AWG24

3. Filler : PE cross

2. Insulation: Solid PE

4. Jacket : LSZH RAL 7035

UNIK ✓

- ✓ Small outer diameter and flexible cable
- ✓ Compliant to ISO 11801 Class E.
- ✓ Jacket LSZH Dca EN50575

APPLICATIONS & PERFORMANCES

The Unikkern Cat6 U/UTP cable AWG 24, rigorously tested to TIA/EIA 568.D-2 and ISO/IEC 11801 Cat6 standards, ensures dependable performance for copper infrastructure. Available in 305m, 500m, and 1000m lengths, it supports link performance up to 90m thanks to Unikkern's advanced assembly technology, making it appropriate for 1G BASE T, 2.5G BASE T, and 5G BASE T applications. Encased in an LSZH sheath that meets CPR Euroclass Dca, this cable is distinguished by its flexibility and smaller outer diameter, facilitating installation in spaces where space is at a premium.

STANDARDS

Cable standard

IEC 60156-5:2020 Cat6

System

ISO/IEC 11801-1:2017 Class E

TIA 568.2-D Cat6

Applications

IEEE 802.3 : 1G, 2,5G & 5G BASE T

IEEE 802.3 POE : Type 1 & 2, up to 30w

CHARACTERISTICS

Conductor : Solid copper awg24

Insulation : Solid polyethylen 0.93+/- 0,03mm

Color coding : Blue/White-blue, Orange/white-orange, Green/White-green, Brown/White-brown

Assembly : Polyethylen minicross filler

Jacket : LSZH

Marking : UNIKKERN DATA CABLE U/UTP CAT6 x PAIRS AWG24 100OHM 250MHZ NVP 69% EN50575 Dca

Certified SGS 21WWYY – IEC 61156-5/ISO11801/TIA-EIA 568.2-D CE LSZH xxxxxxM



KCU6xPLZHD

Cat.6 cable U/UTP LSZH Dca 4 pairs AWG24

ELECTRICAL & MECHANICAL PROPERTIES

Loop resistance (DC max) at 20°C : 98 Ω/Km

Insulation resistance (min) : 5 GΩ*Km

Mutua pacitance : 56+/- 5 nF/Km

Capacitance unbalance at 1khz (pair to ground) : 1600 pF/Km

Resistance unbalance (pair to pair) : 2%

Nominal voltage : 150V

Voltage Test : AC 50hz : 700V / DC : 1000V

Characteristic Impedance at 100 Mhz : 100 ohms+/- 5%

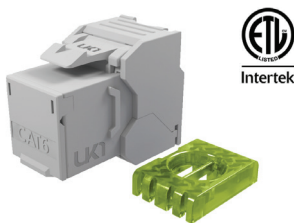
Nominal velocity propagation : 69%

Fire behavior : IEC 60332-1

ORDERING INFORMATION

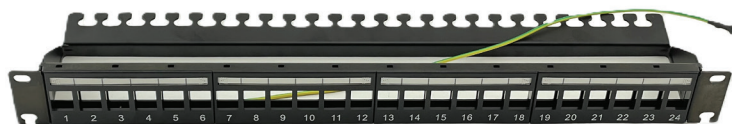
Category	Shielding	Item	Designation	Diameter (nom)	Weight (kg/Km)	Packing
Cat.6	U/UTP	KCU64PLZHDGR5	Cable 4 paires Cat.6 U/UTP awg24 LSZH Dca	5.3 mm	35	D500M
Cat.6	U/UTP	KCU64PLZHDGRB	Cable 4 paires Cat.6 U/UTP awg24 LSZH Dca	5.3 mm	35	B305M

ADDITIONAL ITEMS



KJ6UHQEF

Cat6 keystone jack unshielded



KJPP1UBCTEF

Patch panel 1U 24 ports RJ45

