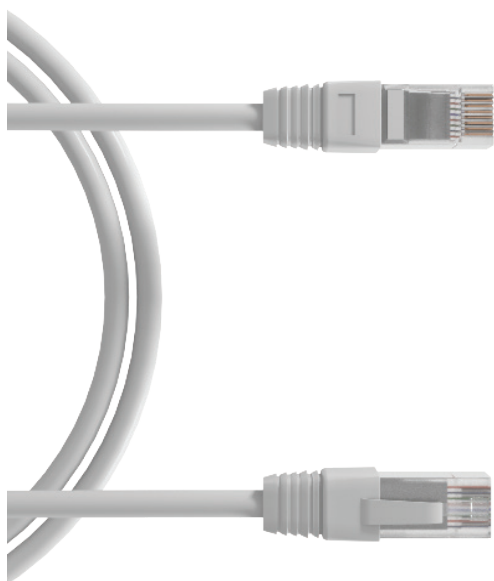


KPU6KZHx

Patchcords CAT6 U/UTP LSZH



UNIK ✓

- ✓ Compliant with Cat6 & exceeding 250Mhz test
- ✓ Snagless boots to protect RJ45 plug
- ✓ LSZH jacket to respect low smoke emission
- ✓ Available in different lengths and different colors

APPLICATIONS & PERFORMANCES

Unikkern's Cat6 U/UTP patch cords, tested to ISO 11801, EN 50173, and TIA/EIA 568 standards, support structured cabling installations. They comply with Cat6, surpassing 250Mhz tests, and ensure backward compatibility.

Available in various colours and lengths, these cords have snagless boots for RJ45 plug protection and an LSOH sheath for low smoke emission.

STANDARDS

Connectors

IEC 60603-7-51 cat6

System

ISO/IEC 11801 Ed3.0 Class E
TIA 568.D-2 Category 6

VoIP & ISDN

Ethernet base T up to 1
Gbits/s

IEEE 802.3 af/at/bt :

PoE, Poe+ et 4pPoE

CHARACTERISTICS

Inner conductor : Copper AWG24

RJ45 contact : Bronze / platine - Gold plated

Insulation diameter : 0.98 mm PE

Outer diameter : 5.3 mm nominal

Color coding : TIA 568B



KPU6KZHx

Patchcords CAT6 U/UTP LSZH

MECHANICAL & ELECTRICAL PROPERTIES

Contact resistance : <20mΩ IEC 60512-2-1 Test 2a

Input/output resistance : <200mΩ IEC 60512-2-1 Test 2a

Insulation resistance : <500mΩ @100V DC IEC 60512-2-1 Test 3a

Voltage: > 1000V DC contact to contact

> 1500V DC contact to ground

IEC 60512-2-1 Test 4a

Insertion cycles : >1000

Max operating voltage : > 72V DC

Power capacity : > 90W

Operating temperature : -40°C to +70°C

ORDERING INFORMATION

Length	Shielding	Item	Description	Packaging
0.5m	U/UTP	KPU6KZH05	RJ45 Patchcord 0.5m LSZH	Eco-friendly paper bag
1m	U/UTP	KPU6KZH1	RJ45 Patchcord 1m LSZH	Eco-friendly paper bag
2m	U/UTP	KPU6KZH2	RJ45 Patchcord 2m LSZH	Eco-friendly paper bag
3m	U/UTP	KPU6KZH3	RJ45 Patchcord 3m LSZH	Eco-friendly paper bag
5m	U/UTP	KPU6KZH5	RJ45 Patchcord 5m LSZH	Eco-friendly paper bag
10m	U/UTP	KPU6KZH10	RJ45 Patchcord 10m LSZH	Eco-friendly paper bag

Available colors: ● ● ● ● ●

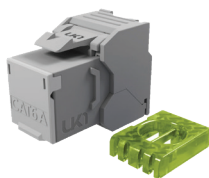
ADDITIONAL ITEMS



KCU64PZHx

Cat6 U/UTP 4pairs LSZH

Available in Dca, Cca & B2ca



KJ6UxHQEF

Cat6 Unshielded RJ45 Kesytone

ETL Verified



KJPP1UUEF

1U 24 Ports Patch Panel

