

# KJFP4545xPANGEF

Angled faceplate 1 or 2 ports 45x45



## UNIK ✓

- ✓ Inclined at 45° for better depth management
- ✓ Keystone attachment
- ✓ Integrated dust cover
- ✓ Built-in marking/labelling

## UNDERSTAND THE PURPOSE

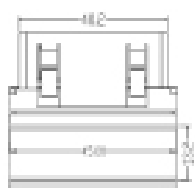
The 45mm x 45mm snap-on faceplate, with 1 or 2 Keystone ports features a spring-loaded «guillotine» type dust cover to protect the connection points.

The Keystone format and compactness, with a depth of 37.7 mm (excluding the cover, 25.6 mm), ensure compatibility with all market accessories, further enhancing its application versatility.

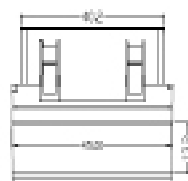
## DISCOVER THE STRUCTURE

**Size : (L)45mm x (l)45mm x (P)37.7mm**

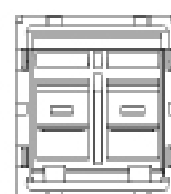
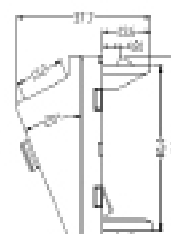
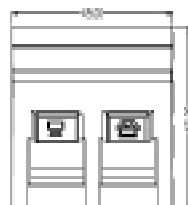
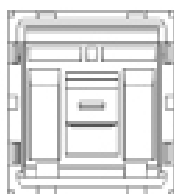
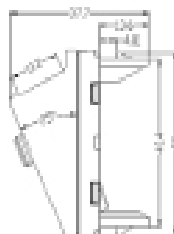
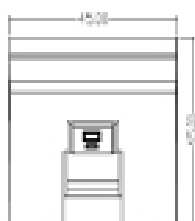
**Materials : ABS & Polycarbonate**



1 port



2 ports



# KJFP4545xPANGEF

Angled faceplate 1 or 2 ports 45x45



## NAVIGATE PURCHASE INFO

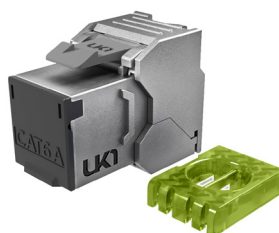
Item	Designation	Packing
KJFP45451PANGEF8	Angled faceplate 1 port	Eco-box of 8pcs
KJFP45451PANGEF48	Angled faceplate 1 port	Eco-box of 48pcs
KKFP45452PANGEF8	Angled faceplate 2 port	Eco-box of 8pcs
KJFP45452PANGEF48	Angled faceplate 2 port	Eco-box of 48pcs

## EXPAND WITH EXTRAS



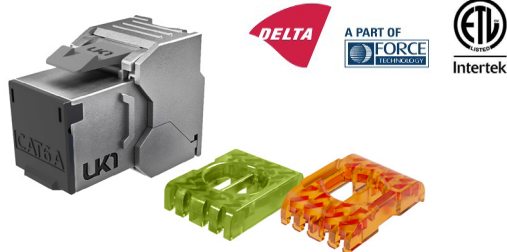
### KJP1UBEF

24 port unloaded patch panel 1U



### KJ6FSHQEF

Cat6 RJ45 keystone jack shielded tooless certified



### KJ6AFSHQEF

Cat6a RJ45 keystone jack shielded tooless certified

