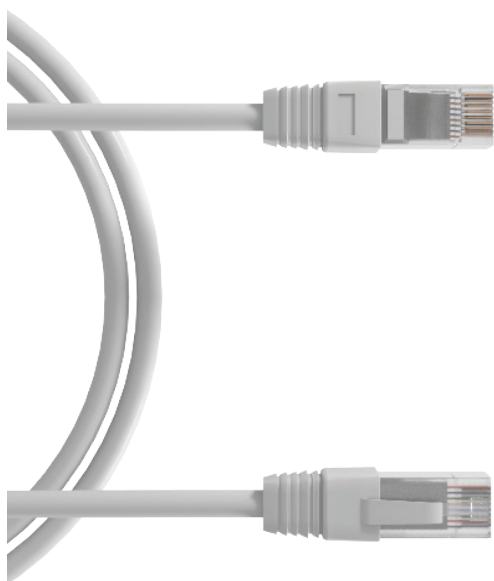


KPSF6AKZHx

Patchcords CAT6A S/FTP LSZH



UNIK ✓

- ✓ Perfect EMI thanks to a braid + shield design
- ✓ Snagless boots to protect RJ45 plug
- ✓ LSZH jacket to respect low smoke emission
- ✓ Available in different lengths and different colors

APPLICATIONS & PERFORMANCES

S/FTP stranded patch cords, constructed with AWG26 cable, are specifically designed to establish a Class Ea channel. These patch cords are notably flexible and durable, ideal for intensive usage. They are assembled with high-quality 8P8C RJ45 plugs, gold plated to 15 micro-inches for optimal conductivity. The cords also withstand connection and disconnection under Power Over Ethernet usage. Specified to 500MHz, they are suitable for 10 Gigabit 10GBase-T and POE++ applications. With an individual foil screen over each pair and a

STANDARDS

Connectors	System	VoIP & ISDN	IEEE 802.3 af/at :
EC 60603-7-51 cat6a	ISO/IEC 11801 Ed3.0 Class Ea TIA 568.D-2 Category 6A	Ethernet base T up to 10 Gbits/s	PoE, Poe+ et 4pPoe

CHARACTERISTICS

Inner conductor : Copper AWG26

RJ45 contact : Bronze / platine - Gold plated

Insulation diameter : 1.02 mm Skin Foam skin PE

Outer diameter : 5.8 mm nominal

Color coding : TIA 568B



KPSF6AKZHx

Patchcords CAT6A S/FTP LSZH

MECHANICAL & ELECTRICAL PROPERTIES

Contact resistance : <20mΩ IEC 60512-2-1 Test 2a

Input/output resistance : <200mΩ IEC 60512-2-1 Test 2a

Insulation resistance : <500mΩ @100V DC IEC 60512-2-1 Test 3a

Voltage: > 1000V DC contact to contact

> 1500V DC contact to ground

IEC 60512-2-1 Test 4a

insertion cycles : > 1000

Max operating voltage : > 72V DC

Power capacity : > 90W

Operating temperature : -40°C to +70°C

ORDERING INFORMATION

Category	Shielding	Item	Description	Packaging
0.5m	S/FTP	KPSF6AKZH05	RJ45 Patchcord 0.5m LSZH	Eco-friendly paper bag
1m	S/FTP	KPSF6AKZH1	RJ45 Patchcord 1m LSZH	Eco-friendly paper bag
2m	S/FTP	KPSF6AKZH2	RJ45 Patchcord 2m LSZH	Eco-friendly paper bag
3m	S/FTP	KPSF6AKZH3	RJ45 Patchcord 3m LSZH	Eco-friendly paper bag
5m	S/FTP	KPSF6AKZH5	RJ45 Patchcord 5m LSZH	Eco-friendly paper bag
10m	S/FTP	KPSF6AKZH10	RJ45 Patchcord 10m LSZH	Eco-friendly paper bag
5m	S/FTP	KPSF6AKZH15	RJ45 Patchcord 15m LSZH	Eco-friendly paper bag

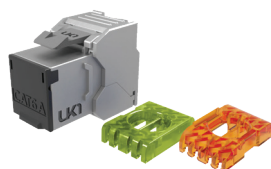
Available colors: ● ● ● ● ●

ADDITIONAL ITEMS



KCFF6A4PZHx

Cat6a F/FTP 4pairs LSZH
Available in Dca, Cca & B2ca



KJ6AFSxHQEF

Cat6a Fully shielded RJ45 Kesytone
ETL verified & DELTA FORCE
certified



KJPP1UBCEF

1U 24 Ports Patch Panel

