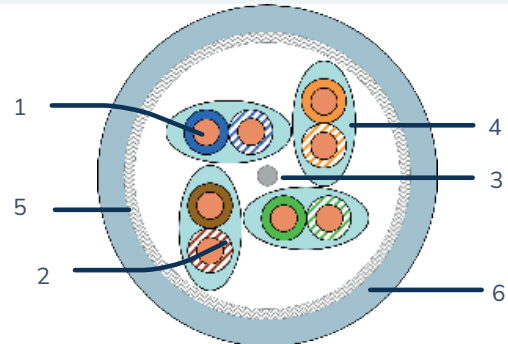
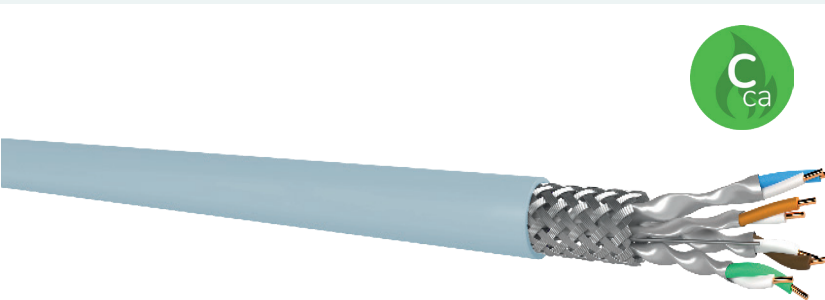
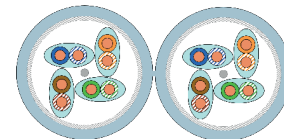


KCSF6AxPZHC

Câble Cat6a S/FTP LSZH Cca 4 pairs and 2x4 pairs



- 1. Conductor : AWG23
- 2. Insulation : Expanded PE SFS
- 3. Drain : Tinned copper
- 4. Shielding : Al/Pes tape
- 5. Braid : Tinned copper
- 6. Jacket : LSZH Blue RAL 5024



Available in 2x4 pairs

UNIK ✓

- ✓ Compliant with ISO 11801 Class Ea
- ✓ LSZH Cca jacket EN50575

THE PURPOSE

Unikkern offers a Cat6a S/FTP LSZH cable that exceeds ISO and TIA standards, providing excellent performance for various applications and benefiting from top-tier electromagnetic immunity.

The cable contains 4 pairs, each individually shielded with a high-quality aluminum/polyester foil, ensuring strong protection against interference.

The wire pairs are carefully arranged with different twisting rates to optimize performance.

An additional overall braid provides extra protection against noise and reduces the risk of interference between pairs.

COMPLIANCE

Standard cable

IEC 60156-5:2020 Cat6a
EN 50288 Cat6a

System

ISO/IEC 11801-1:2017 Class Ea

Applications

IEEE 802.3 : 10G BASE T
IEEE 802.3 POE : Type 1 to 4 up to 90w (4PPoE)

THE STRUCTURE

Conductor : Solid copper AWG23

Insulation : Solid Polyéthylène 1.25+/- 0,05mm

Color code : Blue/White, Orange/White, Green/White, Brown/White

Assembly : Individual shielding with an aluminum/polyester foil

Shielding : Tinned copper braid, minimum 30% coverage

Jacket : Light blue LSZH RAL 5024

Marking : UNIKKERN DATA CABLE S/FTP CAT6A x PAIRS AWG23 100OHMS 500MHZ NVP 78% EN50575 Cca
Certified SGS 21WWYY- IEC 61156-5/ISO11801 CE LSZH xxxxxxM



KCSF6AxPZHC

Câble Cat6a S/FTP LSZH Cca 4 pairs and 2x4 pairs



TECHNICALITIES

Loop resistance (max.) à 20°C : 94 Ω/km

Insulation resistance (min.) : 5 GΩ/km

Mutual capacitance : 56 +/- 5 nF/km

Capacitance unbalance at 1 kHz (pair-to-ground) : 1600 pF/km

Resistance unbalance (pair-to-pair) : 2%

Rated voltage : 72V

Voltage test (1Min) : AC 50Hz : 750V / DC : 1000V

Characteristic impedance at 100 MHz : 100 ohms +/- 5%

Coupling attenuation (nominal value) : 80 dB

Segregation class according to EN 50174-2 : D

Nominal propagation velocity : 78%

Fire resistance : IEC 60332-3-24

Fire performance : EN 50575 / EN 50399 Cca s1d1a1

Halogen-free : IEC 60754-1/2

Acidity : IEC 60754-2

Smoke density : IEC 61034-2

F (MHz)	IL (dB)	RL (dB)	Next (dB)
4	3,7	23,0	78,0
10	5,9	25,0	78,0
16	7,4	25,0	78,0
20	8,3	24,3	78,0
31,25	10,4	23,6	78,0
62,5	14,9	21,5	75,5
100	19,0	20,1	72,4
200	27,5	18,0	67,9
250	31,0	17,3	66,4
300	34,2	17,3	65,2
500	45,3	17,3	61,9

PURCHASE INFO

Category	Shielding	Items	Designation	Diameter (nom)	Weight (Kg/km)	packing
Cat6a	S/FTP	KCSF6A4PZHCB5	Cable 4 pairs Cat6a S/FTP awg23 LSZH Cca	7.3mm	52	D500M
Cat6a	S/FTP	KCSF6A8PZHCB5	Cable 2x4 pairs Cat6a S/FTP awg23 LSZH Cca	7.3 x 14.7 mm	105	D500M



KCSF6AxPZHC

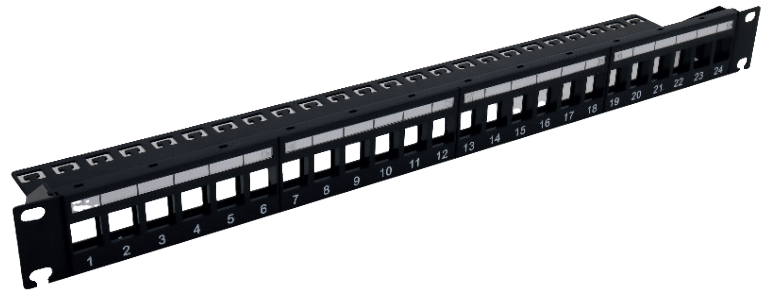
Câble Cat6a S/FTP LSZH Cca 4 pairs and 2x4 pairs

EXTRAS



KJ6AFSHQEF

Cat6a RJ45 shielded Keystone jack, tool-free, ETL & DELTA FORCE certified.



KJPP1UBCEF

24-port 1U unloaded patch panel, black, with grounding and cable cutouts.

