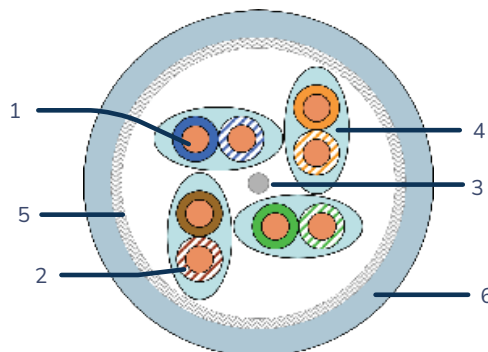
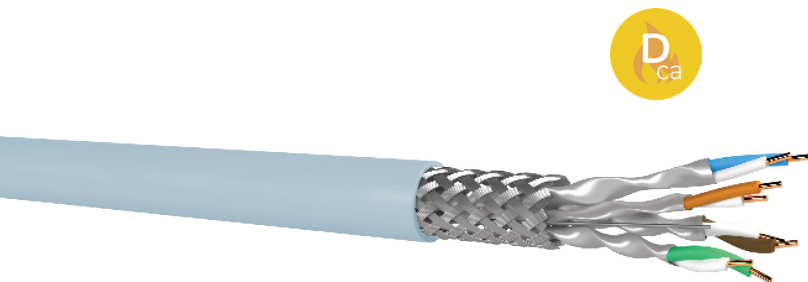


KCSF6AxPZHD

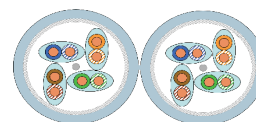
Cat6a cable S/FTP LSZH Dca 4 pairs & 2x4 pairs



UNIK ✓

- ✓ Compliant to ISO 11801 Class Ea
- ✓ Jacket LSZH Dca EN50575

- 1. Conductor : AWG23
- 2. Insulation : Skin foam skin PE
- 3. Drain wire : Tinned copper
- 4. Shielding : Al/Pes foil
- 5. Braiding : Tinned copper
- 6. Jacket : LSZH Blue RAL 5024



Available in 2x4 pairs

THE PURPOSE

Unikkern's Cat6a screened S/FTP LSZH Cable exceeds ISO and TIA standards, delivering excellent Class EA link and channel performance for diverse applications.

Featuring 4 individually wrapped pairs shielded by high-quality aluminium/polyester foil tape, each Category 6a cable ensures efficient screening.

These pairs are carefully assembled with varying lay lengths, optimizing performance. An overall braid screen provides additional noise immunity and minimizes cross talk risks.

COMPLIANCE

Cable	System	Applications
IEC 60156-5:2020 Cat6a	ISO/IEC 11801-1:2017 Class Ea	IEEE 802.3 : 10G BASE T IEEE 802.3 POE : Type 1 to 4, up to 90w

THE STRUCTURE

Conductor : Solid copper awg23

Insulation : Skin foam skin 1.25+/- 0,05mm

Color coding : Blue/White-blue, Orange/white-orange, Green/White-green, Brown/White-brown

Assembly : Individual and overall shielding made of aluminium/Polyester foil

Shielding : Tinned copper braid min. coverage 30%

Jacket : LSZH blue RAL5024

Marking : UNIKKERN DATA CABLE S/FTP CAT6a x PAIRS AWG23 100OHM 500MHZ NVP 76% EN50575 Dca Certified SGS 21WWYY- IEC 61156-5/ISO11801/TIA-EIA 568.2-D CE LSZH xxxxxxM



www.unikkern.com

This document is confidential and is the property of Syskern. The document may not be copied or modified in any other form, in whole or in part, without written permission. The specifications in this document are not binding and are subject to change without notice.

Ce document est confidentiel et est la propriété de Syskern. Il ne peut être copié ou modifié sous aucune autre forme, en totalité ou en partie, sans autorisation écrite. Les spécifications de ce document ne sont pas contraignantes et peuvent être modifiés sans préavis.

KCSF6AxPZHD

Cat.6a cable S/FTP LSZH Dca 4 pairs & 2x4 pairs

TECHNICALITIES

Loop resistance (DC max) at 20°C : 94 Ω/Km

Insulation resistance (min) : 5 GΩ*Km

Mutual capacitance : 56+/- 5 nF/Km

Capacitance unbalance at 1khz (pair to ground) : 1600 pF/Km

Resistance unbalance (pair to pair) : 2%

Nominal voltage : 72V

Voltage Test : AC 50hz : 700V / DC : 1000V

Characteristic Impedance at 100 Mhz : 100 ohms+/- 5%

Nominal velocity propagation : 76%

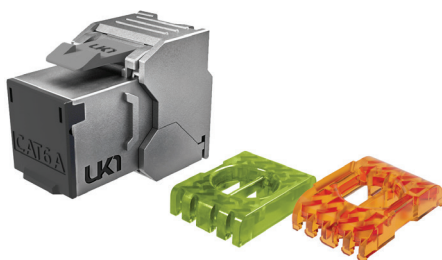
Fire behavior : IEC 60332-1

F (MHz)	IL (dB)	RL (dB)	Next (dB)
4	3.7	23.0	78.0
10	5.9	25.0	78.0
16	7.4	25.0	78.0
20	8.3	24.3	78.0
31.25	10.4	23.6	78.0
62.5	14.9	21.5	75.5
100	19.0	20.1	72.4
200	27.5	18.0	67.9
250	31.0	17.3	66.4
300	34.2	17.3	65.2
500	45.3	17.3	61.9

PURCHASE INFO

Category	Shielding	Item	Designation	Diameter (nom)	Weight (Kg/Km)	Packing
Cat6a	S/FTP	KCSF6A4PZHDOR5	Cable 4 paires Cat6a S/FTP awg23 LSZH Dca	7.3mm	52	D500M
Cat6a	S/FTP	KCSF6A8PZHDOR5	Cable 2x4 paires Cat6a S/FTP awg23 LSZH Dca	7.3 x 14.7 mm	105	D500M

EXTRAS



KJ6AFSHQEF

Cat6a RJ45 keystone jack shielded toolless certified



KJPP1UBCEF

24 port unloaded patch panel 1U

