

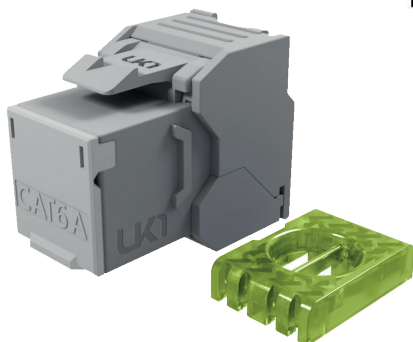
# KJ6AUHQx

Keystone jack Cat.6a RJ45 unshielded Toolless



UNIK ✓

- ✓ Component certified Cat6a ISO
- ✓ Fast & easy to terminate, toolless
- ✓ Conforming to Class Ea up to 500 MHz
- ✓ Integrated anti-dust shutter



Cat6a AWG 23

## THE PURPOSE

The Keystone KJ6AUHQ is unshielded and benefits from excellent electrical performance. The average margins of NEXT and RETURN LOSS when tested in Class Ea are excellent with the use of standardized cables. Use with the adequate cable, the compensation of ANEXT is perfect and offer excellent usage of 10G. Its Keystone size and compactness 33.6mm (shutter included) allow compatibility with all accessories on the market.

## COMPLIANCE

### Connectors

IEC 60603-7-51 Cat6a  
IEC 605612-99-002 2A  
(Contact endurance test)

### System

ISO/IEC 11801-1:2017 Class Ea

### Applications

Ethernet base T up to 10 Gbits/s  
VoIP & telephone  
IEEE 802.3 af/at/bt : PoE, PoE+ et  
4pPoE

## THE STRUCTURE

**Sizes :** (L)24.3mm x (l)14.5mm x (D)33.6mm

**IDC :** Bronze + platinum

**Wires :** AWG23

**Contacts :** Phosphore bronze + Au 1.2 micron

**Housing :** Thermoplastic ULV0

**Green insert :** Insulation diameter max 1.25 mm

**Cable diameter max :** 7.8 mm

**Color coding :** TIA 568B & 568A



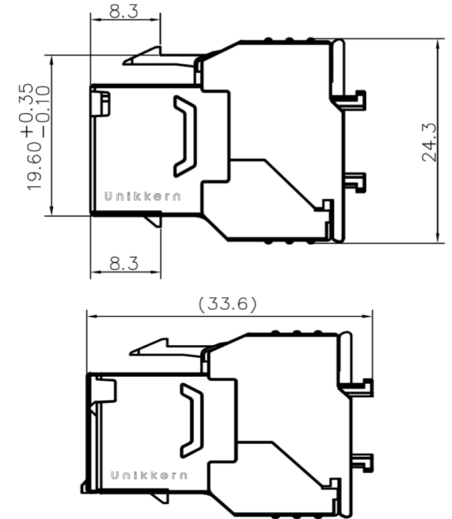
# KJ6AUHQx

Keystone jack Cat.6a RJ45 unshielded Toolless



## TECHNICALITIES

<b>Contact resistance :</b>	<20mΩ (IEC 60512-2-1 Test 2a)
<b>Input/ output resistance :</b>	<200mΩ (IEC 60512-2-1 Test 2a)
<b>Insulation resistance :</b>	<100mΩ @500V DC (IEC 60512-2-1 Test 3a)
<b>Voltage :</b>	> 1000V DC contact to contact (IEC 60512-2-1 Test 4a)
<b>Insertion cycles :</b>	> 1000
<b>Max operating voltage:</b>	> 72V DC - 125 VACV (RMS)
<b>Power capacity :</b>	> 90W
<b>Operating temperature :</b>	-40°C à +85°C



## PURCHASE INFO

Category	Shielding	Items	Designation	Packing
Cat6a	Unshielded	KJ6AUHQEF1	Keystone jack Cat6a unshielded toolless	Eco bag of 1 pc
Cat6a	Unshielded	KJ6AUHQEF24	Keystone jack Cat6a unshielded toolless	Eco box of 24 pcs

## EXTRAS



**KJPP1UBCTEF**

Patch panel 1U 24 ports RJ45



**KJFP4545XPEF**

Faceplate 1 port RJ 45x45

