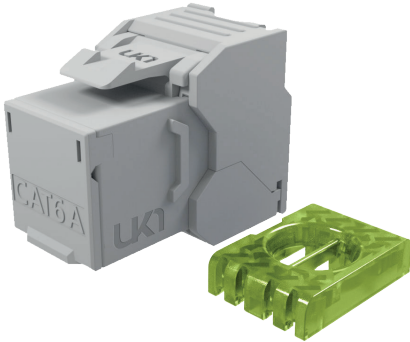


KJ6AUx

Keystone jack Cat.6a RJ45 unshielded Tooless

UNIK ✓

- ✓ Compact & unique design
- ✓ Fast & easy to terminate, tooless
- ✓ Conforming to Class Ea up to 500 MHz
- ✓ Integrated anti-dust shutter



Cat6a AWG 23

THE PURPOSE

The Kesytone KJ6AU is unshielded and benefits from excellent electrical performance. The average margins of NEXT and RETURN LOSS when tested in Class Ea are excellent with the use of standardized cables. Use with the adequate cable, the compensation of ANEXT is perfect and offer excellent usage of 10G. Its Keystone size and compactness 33.6mm (shutter included) allow compatibility with all accessories on the market.

COMPLIANCE

Connectors

IEC 60603-7-51 Cat6a

System

ISO/IEC 11801 Ed3.0 Class Ea

Applications

Ethernet base T up to 10 Gbits/s
VoIP & telephone
IEEE 802.3 af/at/bt : PoE, PoE+ et

THE STRUCTURE

Sizes : (L)24.3mm x (l)14.5mm x (D)33.6mm

IDC : Bronze + platinum

Wires : AWG23 & AWG22

Contacts : Phosphore bronze + Au 1.2 micron

Housing : Thermoplastic ULV0

Green insert : Insulation diameter max 1.25 mm

Cable diameter max : 8.2 mm

Color coding : TIA 568B & 568A



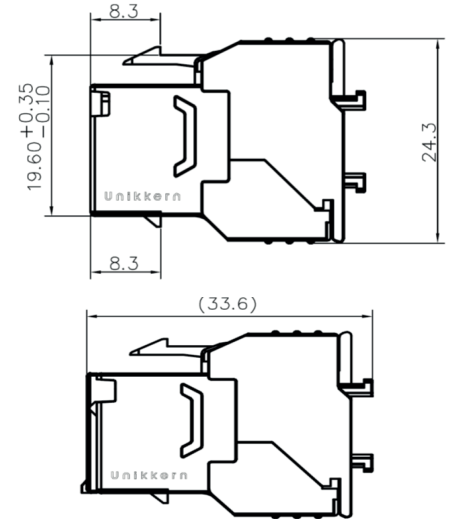
KJ6AUx

Keystone jack Cat.6a RJ45 unshielded Toolless



TECHNICALITIES

Contact resistance :	<20mΩ (IEC 60512-2-1 Test 2a)
Input/ output resistance :	<200mΩ (IEC 60512-2-1 Test 2a)
Insulation resistance :	<100mΩ @500V DC (IEC 60512-2-1 Test 3a)
Voltage :	> 1000V DC contact to contact (IEC 60512-2-1 Test 4a)
Insertion cycles :	> 1000
Max operating voltage:	> 72V DC - 125 VACV (RMS)
Power capacity :	> 90W
Operating temperature :	-40°C à +85°C



PURCHASE INFO

Category	Shielding	Items	Designation	Packing
Cat6a	Unshielded	KJ6AUEF24	Keystone jack Cat6a unshielded toolless	Eco box of 24 pcs

EXTRAS



KJPP1UBCTEF

Patch panel 1U 24 ports RJ45



KJFP4545XPEF

Faceplate 1 port RJ 45x45

