

KJPP1UBCANEF

19-inch 1U V- SHAPE patch panel with 24 RJ45 Keystone Ports
Automatic grounding and pre-cut mounting slots



- ✓ Elegant and minimalist design.
- ✓ Automatic grounding at the front and grounding connection for shielded connectors.
- ✓ Integrated polycarbonate label holders for quick identification.
- ✓ Rear support bar with secure attachment.
- ✓ Pre-cut 19-inch mounting slots for quick one-hand installation.

THE PURPOSE

The Unikkern V-SHAPE 24 ports offers an excellent solution for high density applications. Through the lateral shape, you can easily manage 12 patch cords from each sides avoiding cable management.

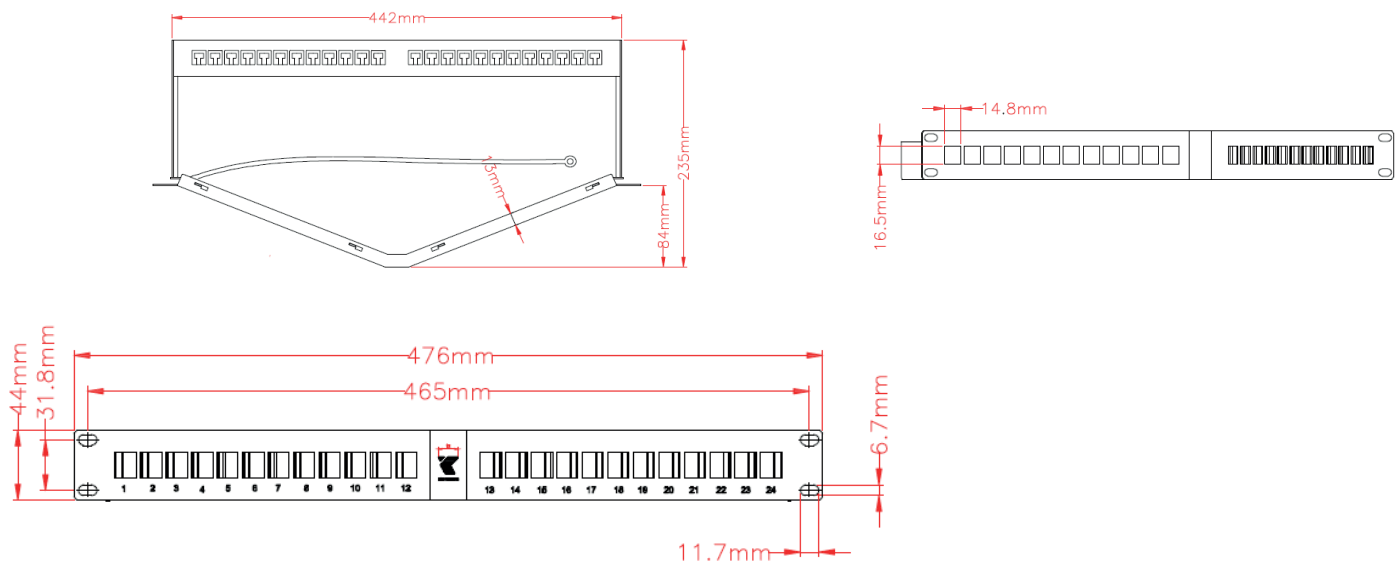
Made with high-quality materials to ensure reliability over years of use.

Identification is facilitated by labels or silk-screened numbers from 1 to 24.

THE STRUCTURE

Dimensions : (L)476mm x (l)44mm x (P)235mm

Material : Steel and galvanized steel



www.unikkern.com

This confidential Syskern datasheet cannot be altered or reproduced without written permission. Its specifications are subject to change without notice.

Cette fiche technique confidentielle de Syskern ne peut être modifiée ou reproduite sans permission écrite. Ses spécifications peuvent changer sans préavis.

KJPP1UBCANEF

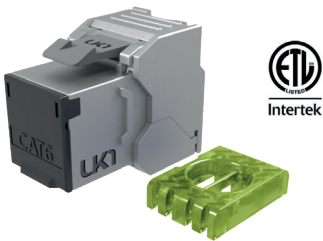
19-inch 1U V- SHAPE patch panel with 24 RJ45 Keystone Ports
Automatic grounding and pre-cut mounting slots



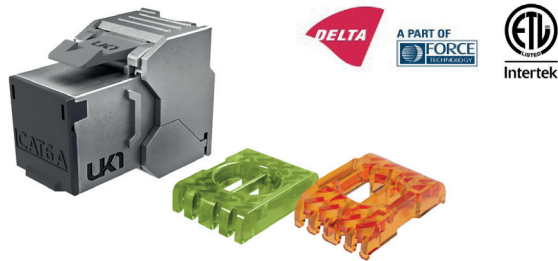
PURCHASE INFO

References	Designation	Packaging
KJPP1UBCANEF	19-inch 1U V- SHAPE 24-port Keystone panel	Eco-box de 1p

EXTRAS



KJ6FSHQEF
Shielded Cat6 RJ45 Keystone jack, tool-free certified



KJ6AFSHQEF
Shielded Cat6a RJ45 Keystone jack, tool-free certified



KSBRUSHCEF
19-inch 1U cable management panel with brush



KSPFK1U4RCFEF
19-inch 1U cable management panel with 4 rings

