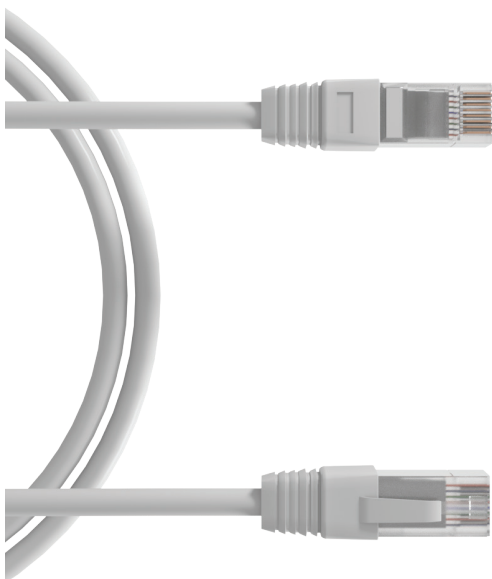


# KPUU6KZHx

Patchcords CAT6 U/UTP LSZH



## UNIK ✓

- ✓ Compliant with Cat6 & exceeding 250Mhz test
- ✓ Snagless boots to protect RJ45 plug
- ✓ LSZH jacket to respect low smoke emission
- ✓ Available in different lengths and different colors



## THE PURPOSE

Unikkern's Cat6 U/UTP patch cords, tested to ISO 11801, EN 50173, and TIA/EIA 568 standards, support structured cabling installations. They comply with Cat6, surpassing 250Mhz tests, and ensure backward compatibility.

Available in various colours and lengths, these cords have snagless boots for RJ45 plug protection and an LSZH sheath for low smoke emission.

## COMPLIANCE

### Connector

IEC 60603-7-5:2010 Cat6

### System

ISO/IEC 11801-1:2017 Class E

### Applications

IEEE 802.3 : 1G BASE T

IEEE 802.3 POE : Type 1 to 4 up to 90w

## THE STRUCTURE

**Inner conductor** : Copper AWG24

**Insultation diameter** : 0.98 mm PE

**Outer diameter** : 5.3 mm nominal

**RJ45 contact** : Bronze / platine - Gold plated

**Color coding** : TIA 568B



# KPUU6KZHx

Patchcords CAT6 U/UTP LSZH

## TECHNICALITIES

**Contact resistance :** <20mΩ IEC 60512-2-1 Test 2a

**Input/output resistance :** <200mΩ IEC 60512-2-1 Test 2a

**Insulation resistance :** <500mΩ @100V DC IEC 60512-2-1 Test 3a

**Voltage:** > 1000V DC contact to contact

> 1500V DC contact to ground

IEC 60512-2-1 Test 4a

**Insertion cycles :** >1000

**Max operating voltage :** > 72V DC

**Power capacity :** > 90W

**Operating temperature :** -40°C to +70°C

## PURCHASE INFO

Length	Shielding	Item	Description	Packaging
0.5m	U/UTP	KPUU6KZH05	CAT6 U/UTP Patchcord 0.5m LSZH	Eco-friendly paper bag
1m	U/UTP	KPUU6KZH1	CAT6 U/UTP Patchcord 1m LSZH	Eco-friendly paper bag
2m	U/UTP	KPUU6KZH2	CAT6 U/UTP Patchcord 2m LSZH	Eco-friendly paper bag
3m	U/UTP	KPUU6KZH3	CAT6 U/UTP Patchcord 3m LSZH	Eco-friendly paper bag
5m	U/UTP	KPUU6KZH5	CAT6 U/UTP Patchcord 5m LSZH	Eco-friendly paper bag
10m	U/UTP	KPUU6KZH10	CAT6 U/UTP Patchcord 10m LSZH	Eco-friendly paper bag

Available colors: ● ● ● ● ●

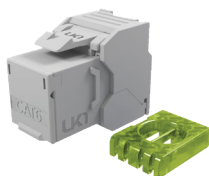
## EXTRAS



### KCU64PZHx

Cat6 U/UTP 4pairs LSZH

Available in Dca, Cca & B2ca



### KJ6UxHQEF

Cat6 Unshielded RJ45 Kesytone

ETL Verified



### KJPP1UUEF

1U 24 Ports Patch Panel

